



Noda Co., Ltd.

Cutting Die · Chrome Die · System Development

Osaka · Hiroshima · Aichi · Saitama
Vietnam · Thailand · Philippines

NODA Co.,Ltd.

Philosophy

We are aiming for customer satisfaction

We are challenging to face the infinite possibilities

We are continuing to deal with the innovative changes of this generation



OSAKA FACTORY

2-2-15, Nakagawahigashi, Ikuno-ku, Osaka, 544-0006
TEL : 06-6756-0800
FAX : 06-6756-0805

TOKYO FACTORY

1-18-6, Machiya, Sakura-ku, Saitama, 338-0836
TEL : 048-762-3711
FAX : 048-762-3712

CHUBU FACTORY

20-10, Nishibiwajimachohashizume,
Kiyosu-shi, Aichi, 452-0026
TEL : 052-506-2022
FAX : 052-506-2029

HIROSHIMA FACTORY

1-14-20, Shinonome, Minami-ku, Hiroshima, 734-0022
TEL : 082-890-7775
FAX : 082-890-7776

KYUSHU SALES OFFICE

4-6-28, Tenjin, Chuo-ku, Fukuoka, 810-0001
TEL : 050-1781-0025
FAX : 082-890-7776

*The numbers are Shared with Hiroshima Factory

*Unable to receive mail

NODA VIETNAM CO., LTD.

Unit 27, Plot N-1A, Thang Long Industrial park,
Vong La commune, Dong Anh district, Hanoi, 12351, Vietnam
TEL : +84(24)3959-0240
FAX : +84(24)3959-0238

NODA THAILAND CO., LTD.

55/53 Moo15, Bangsaothong Sub-District, Bangsaothong
District, Samutprakarn, 10570, Thailand
TEL : +66(0)2-182-5276
FAX : +66(0)2-182-5277

NODA KIGATA PHILIPPINE CORPORATION

Bldg. U-6B, Lot 22-B, Phase 1B, FPIP-SEZ, Tanauan City,
Batangas, 4232, Philippines
TEL : +63(0)917-872-2647

Why Choose Us

DX

Noda started up its DX department, "Innovation Factory," in 2022. Based on our philosophy of "We are continuing to deal with the innovative changes of this generation," we are working on realizing the optimal DX for our company through trial and error. While DX is essential for manufacturing, many small and medium-sized companies struggle to find suitable approaches. Our strength is our ability to identify problems and come up with solutions. As a fellow manufacturing company, we will empathize with you and offer the best DX solutions.

Achievements

Since 1985, Noda has continued to grow together with over 5,000 customer companies. We have four factories in Japan and three overseas, and we will continue to expand our business globally, with the goal of achieving even greater growth. This challenge is supported by a solid foundation of high growth and profit margins, a testament to the gratitude we receive from our customers. Noda will continue to evolve together with our customers.

Customer Support

Noda pursues customer comfort and believes that "customer service is our product." We provide one-stop service to meet all of our customers' needs, from proposals to after-sales support, as well as the quality of our cutting dies. Furthermore, we are open to discussing and fulfilling challenging requests and consultations that other companies may decline. We provide prompt quotations and responses to inquiries, and offer comfortable service while being attentive to our customers.



Responsibility of Supplying

Noda's mission is to provide a stable supply that supports customers' business activities. To ensure a stable supply, we have a global procurement system and can flexibly respond to changing environments. This allows us to provide solid support for our customers' businesses while minimizing risk. We promise to contribute to the success of our customers' business activities by making the most of our resources.



Techniques

Noda has developed a system for ensuring a consistent supply of high-quality cutting dies through personnel exchanges and technology transfer both in Japan and abroad. At the annual joint training sessions with overseas factories, experienced craftsmen with over 30 years of industry experience collaborate younger members to work on a wide range of programs aimed at enhancing product quality and excellence. By adapting flexibly to changing times and fusing digital technology with craftsmanship, the entire group is able to consistently deliver high-quality cutting dies. Pursuing technological capabilities and innovation, Noda always delivers cutting dies that exceed customer expectations.



Best Price

Noda offers "value for money." The price we offer is not just a cost. This value includes not only production costs and quality assurance, but also proposals based on our extensive track record, rapid response, a stable global supply network, and digital-based operational efficiency. This is the UX created by our unique business model. As a partner that can create the future together with our customers, we prioritize long-term value.

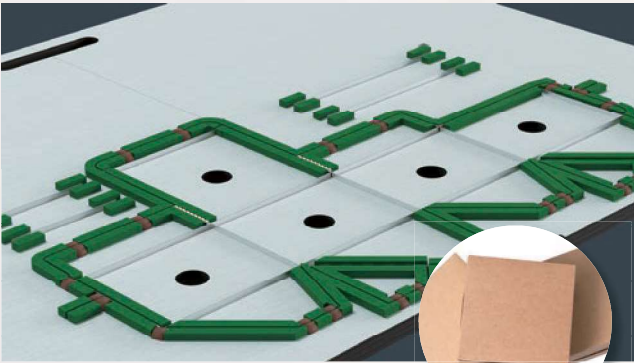
THOMSON

The Thomson Die is made by creating grooves in a base plate such as plywood or resin using a laser and embedding blades into it.

It is used in the manufacturing process of all kinds of products and can be used to punch out a wide variety of materials.

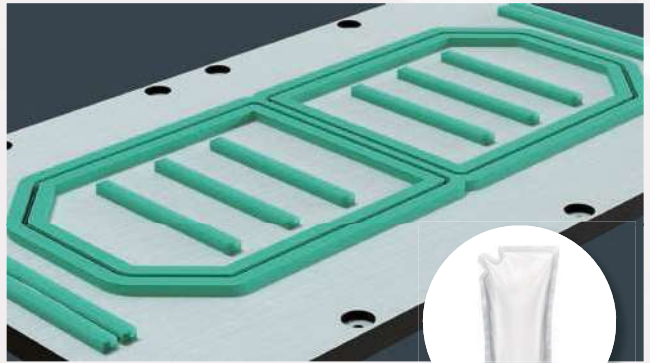
Carton Box and Cardboard Box

Packaging, Decorative Box, Blanking, Stripping, Counter Plate, etc.



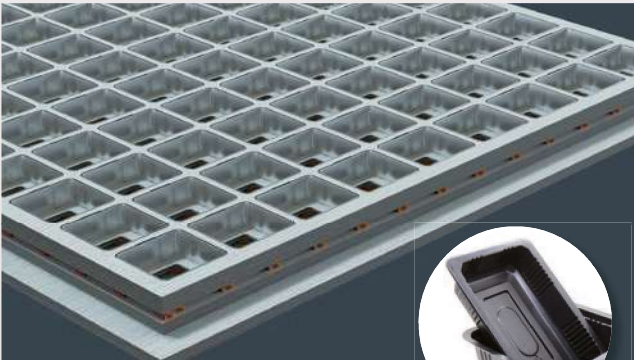
Bag Making

Various Filling Pouches, Sealing Bars, Punches, etc.



Vacuum Forming

Food and Industrial Trays, Blister Packs, etc.



Industrial Products

Gaskets, Packings, Cushioning Materials, Automotive Interior Parts, etc.



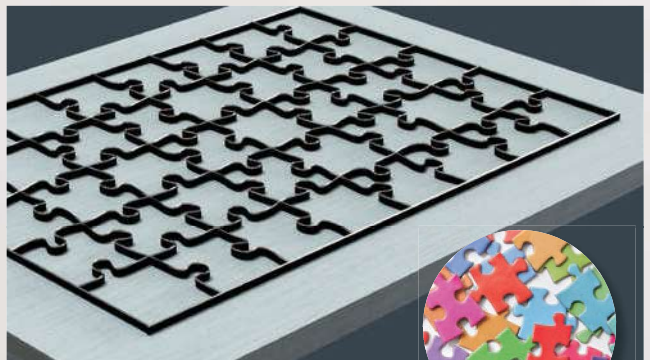
Electronics Related Products

Heat Dissipation Sheets, Substrates, Tapes, Films, Precision Components, etc.



Others

Miscellaneous Goods, POP Displays, Nameplates, Leather, Apparel, Food, Jigs, etc.

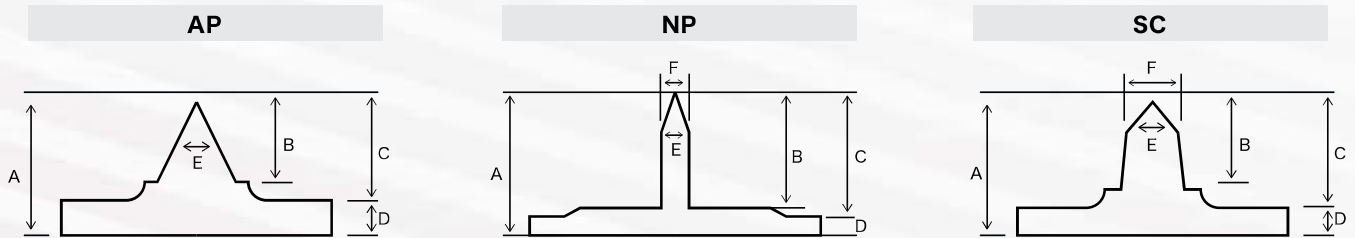


CHROME DIE

The Chrome Die is an etching blade manufactured by Noda.

It offers superior dimensional and height accuracy compared to the Thomson Die, and is as accurate as a metal mold.

*The Pinnacle Die is a trademark of Tsukatani Hamono Mfg. Co., Ltd. Standard products are provided as the Pinnacle Dies.



| | | | | | | | |
|-----------------------|-------|------------------|-------|--------------|--------------------|----------------|-------------------------------------|
| Dimensional Tolerance | ±0.05 | Height Tolerance | ±0.01 | Maximum Size | *Please contact us | Base Tolerance | ±0.05~±0.1 (*Material-dependent) |
|-----------------------|-------|------------------|-------|--------------|--------------------|----------------|-------------------------------------|

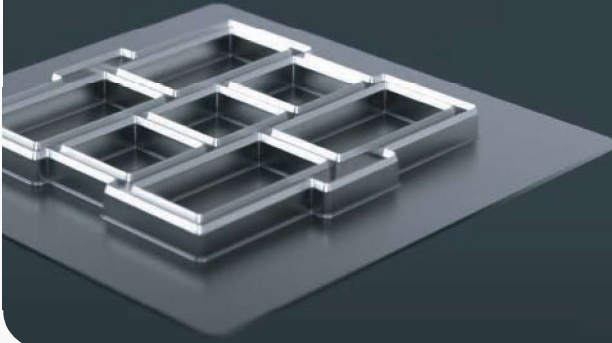
| | For Rotary Cutting | For Flat Cutting | | | | | |
|--------------------|---|------------------|-----|------------------------|-----|---------|-----------------|
| A: Blade Height | 0.35~0.58 | 0.6 | 0.8 | 1.2 | 2 | 3 | 4~5 |
| B: Blade Depth | 0.20~0.30 | 0.3 | 0.4 | 0.8 | 1.3 | 2.1~4.1 | |
| C: Etching Depth | 0.22~0.45 | 0.4 | 0.6 | 1 | 1.5 | 2.3~4.3 | |
| D: Base Thickness | 0.13~0.18 | 0.2 | 0.2 | 0.2 | 0.5 | 0.7 | |
| E: Blade Angle | 30° · 40° · 50° · 60° · 80° (*Irregular angles available) | | | | | | |
| F: Blade Thickness | Unselectable | | | Selectable only for NP | | | Selectable |
| G: Blade Shape | AP | | | AP or NP | | | SC |
| | Standard products are provided as Pinnacle Dies (Tsukatani Hamono Mfg. Co., Ltd.) | | | | | | Shin Chrome Die |
| | Please feel free to contact us for any inquiries other than those listed above | | | | | | |

| | AP | | | | NP | | | SC |
|------------------------|----------------------------|------|-------------------|------|-----|-------------------|-----|-----|
| Blade Height | 0.35~0.58 | 0.6 | 0.8 | 1.2 | 1.2 | 2 | 3 | 4/5 |
| Minimum Radius | 0.3 | 0.25 | 0.3 | 0.55 | 0.1 | 0.1 | 0.1 | 0.1 |
| Minimum Line Width | 0.7 | 0.6 | 0.7 | 1.1 | 0.9 | 1 | 1.2 | 2 |
| Minimum Chamfer | 0.2 | 0.15 | 0.2 | 0.35 | 0.3 | 0.3 | 0.3 | 0.1 |
| Minimum Crank | 0.2 | 0.2 | 0.2 | 0.2 | 0.2 | 0.2 | 0.2 | 0.5 |
| Minimum Diameter | 0.7 | 0.6 | 0.7 | 1.1 | 0.9 | 1 | 1.2 | 2 |
| Through Hole | From $\phi 2$ | | | | | | | |
| Creasing · Perforating | Please inquire for details | | | | | | | |
| Blade Angle | 60° *Rotary cutting | | 50° *Flat cutting | | | 40° *Flat cutting | | |

| | Hardening Method | | |
|---------------|------------------------|-------------------|-----------------------------------|
| Image | Only for Pinnacle Dies | | Pinnacle Dies Shin Chrome Dies |
| | | | |
| Type | Hard type | Titanium coating | DLC coating |
| Hardness | HRC:68 HV:980 | HRC:80 HV:1800 | HRC:72 HV:1200 |
| Hardened part | Surface | | |

| Non-Adhesive Treatment |
|--|
| The ultra-thin coating (monomolecular film bonding) reduces adhesion of sticky substances, improving workability and quality |
| |
| Fluorine-based Cannot be wiped off with thinner |

SHIN CHROME DIE

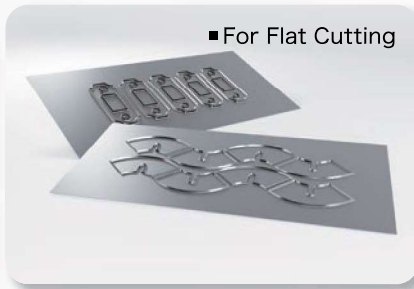


A World First! The Same Height as Thomson Dies!

The blade height is 4t and 5t. * 5t and above are also available.

Combines the ease of use of wooden molds with the precision of metal molds, and can also be used with thick resin.

Blade height and blade angle can be freely designed.



Advantages of the Chrome Dies and the Pinnacle Dies

- The same precision as engraving blades and molds at a low price!
- No seams thanks to etching + NC processing!
- No need for make-ready, shortening work time!
- Blade thickness and angle can be designed to suit your needs!

Use

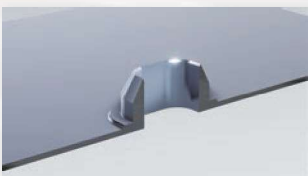
Films, Seals, Resins,
Non-Woven Fabrics,
Half Cuts, etc.

| | Precision | Delivery | Cost | Durability | Sharpness | Ejection | Rotary | Adjustment | Sharpening |
|---------------------------|-----------|----------|------|------------|-----------|----------|--------|------------|------------|
| Thomson Die | ○ | ◎ | ◎ | ○ | ◎ | ◎ | × | △ | △* |
| Shin Chrome Die | ◎ | ○ | ○ | ○ | ○ | ◎ | × | ◎ | × |
| Chrome Die / Pinnacle Die | ◎ | ○ | ○ | ○ | ○ | ○ | ◎ | ◎ | × |
| Mold | ◎ | △ | △ | ◎ | △ | ◎ | × | △ | ◎ |

■ Instructions on how to use it can be found on our website's Chrome Die page.

*Blade replacement

Special Processing



Side-Open Edge



Micro Perforation and
Different Height Perforation



Side Edge and
Irregular Angles Edge



T-Shaped Different Height Edge
and Different Height Edges

MATERIALS

In addition to our in-house metal processing, we can also procure auxiliary materials from both Japan and overseas by utilizing our unique network.

We can also find replacements for materials that are hard to obtain or discontinued products.

■ NC Punch (Feed Through)



■ NC Punch (Side Through)



■ NC Punch (Jointed Side Through)



■ Engraving Blade
(Feed Through + Thomson Blade)



■ Engraving Blade



■ Special Punch



■ Metal Processing



■ Other Cutting Dies



■ Counter Plate



■ Ejection Rubber



■ Make-Ready Tape



■ Spray



*We also handle materials that are not listed here. Please feel free to contact us.

NODA×DIGITAL

3x Sales, 10x Profit Margins, 88% Less Overtime! Noda's Manufacturing DX is the Way to Go!

In order to adapt to changing times and survive, Noda has grown with its own unique business model.

This overwhelming growth is supported by many in-house developed systems.

We have developed more than 30 systems to solve a wide range of problems.

In particular, the production process management system "Whiteboard" has dramatically improved work efficiency and is now a system that can be offered to customers.

In recent years, we have also been producing a website that makes full use of 3D graphics and videos.

We provide an easy-to-understand introduction to the use, structure, and proposals for the niche product "cutting dies."

In-house System Development

Inventory Management, Process Management,
Attendance Management, Work Automation,
Evaluation Apps, Quotation Apps

System Sales

Production Management
Systems, Whiteboard

Videos

Easy-to-understand
Explanations on Cutting
Process and Materials

3D Graphics

Clear Visualization of
Manufacturing Structure

Noda Co., Ltd.

OSAKA MAIN OFFICE

502 CONCOM Minamikyuhoji,
1-6-6 Minamikyuhojimachi, Chuo-ku, Osaka, 541-0058

TEL : 06-6736-5521 FAX : 06-7708-8850

*Administrative department only (Accounting, General Affairs, System Development)

